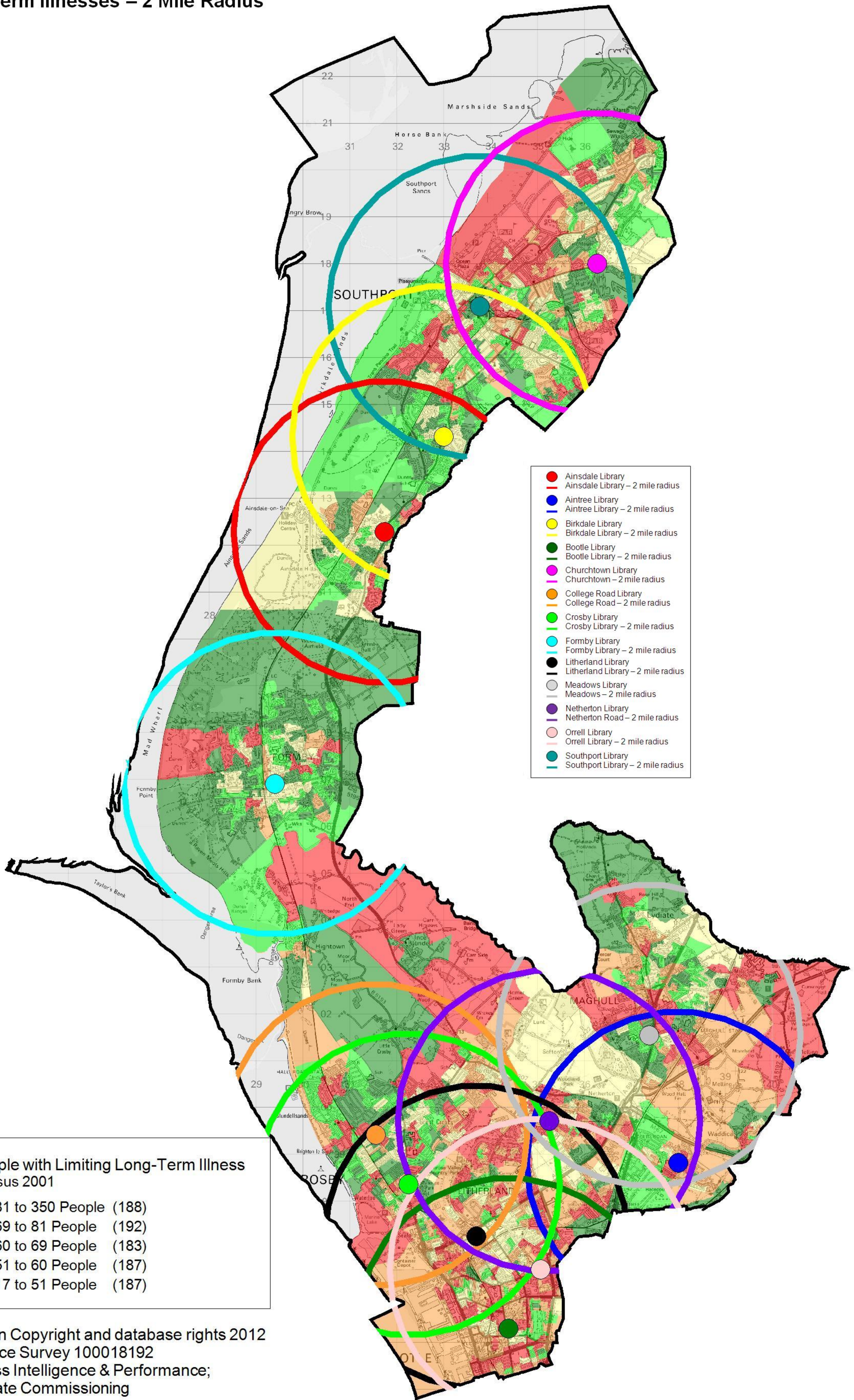


# Long Term Illnesses – 2 Mile Radius



- Ainsdale Library
- Ainsdale Library – 2 mile radius
- Aintree Library
- Aintree Library – 2 mile radius
- Birkdale Library
- Birkdale Library – 2 mile radius
- Bootle Library
- Bootle Library – 2 mile radius
- Churchtown Library
- Churchtown – 2 mile radius
- College Road Library
- College Road – 2 mile radius
- Crosby Library
- Crosby Library – 2 mile radius
- Formby Library
- Formby Library – 2 mile radius
- Litherland Library
- Litherland Library – 2 mile radius
- Meadows Library
- Meadows – 2 mile radius
- Netherton Library
- Netherton Road – 2 mile radius
- Orrell Library
- Orrell Library – 2 mile radius
- Southport Library
- Southport Library – 2 mile radius

**People with Limiting Long-Term Illness  
Census 2001**

81 to 350 People	(188)
69 to 81 People	(192)
60 to 69 People	(183)
51 to 60 People	(187)
17 to 51 People	(187)