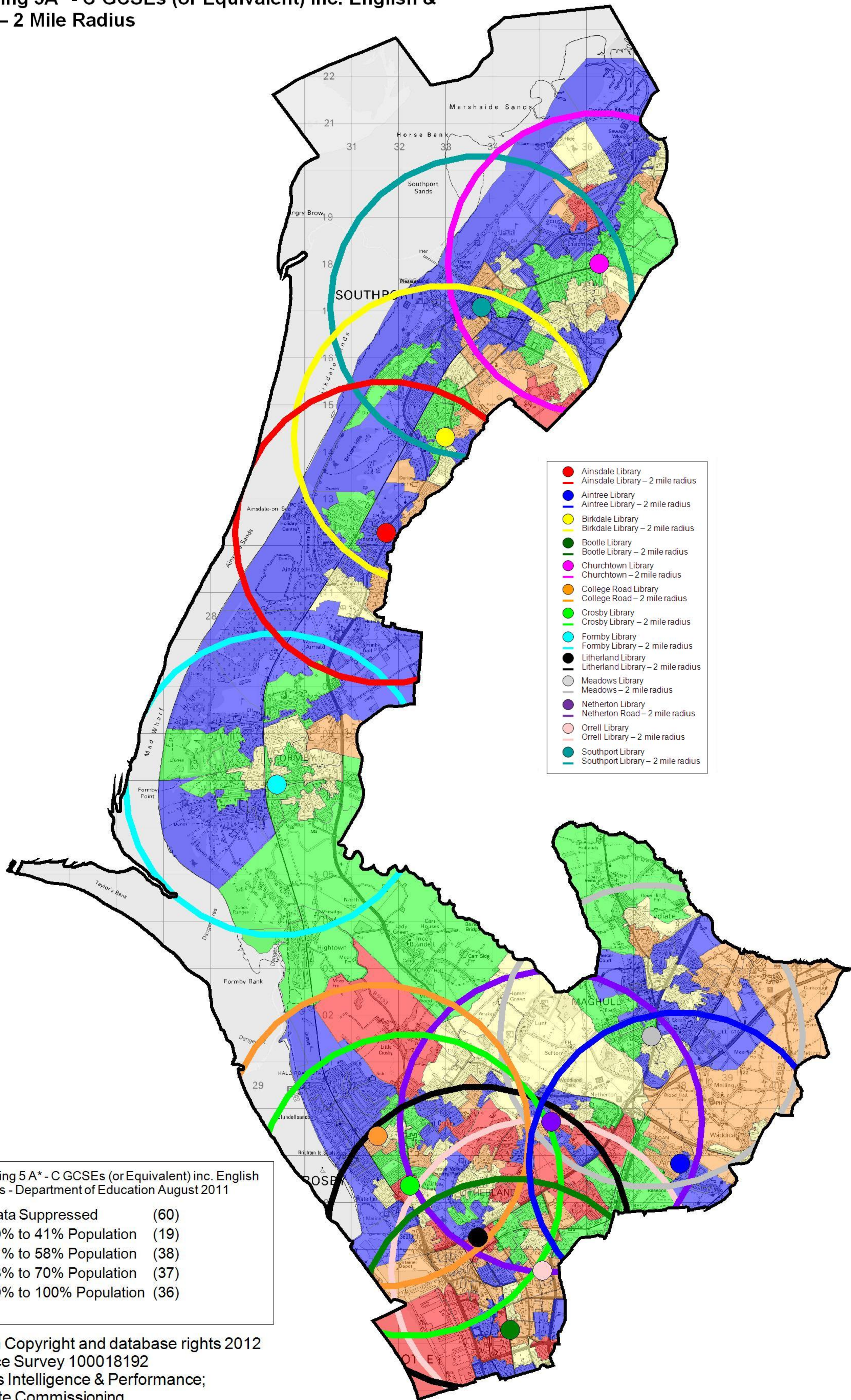


Achieving 5A* - C GCSEs (or Equivalent) inc. English & Maths – 2 Mile Radius



- Ainsdale Library
- Ainsdale Library – 2 mile radius
- Aintree Library
- Aintree Library – 2 mile radius
- Birkdale Library
- Birkdale Library – 2 mile radius
- Bootle Library
- Bootle Library – 2 mile radius
- Churchtown Library
- Churchtown – 2 mile radius
- College Road Library
- College Road – 2 mile radius
- Crosby Library
- Crosby Library – 2 mile radius
- Formby Library
- Formby Library – 2 mile radius
- Litherland Library
- Litherland Library – 2 mile radius
- Meadows Library
- Meadows – 2 mile radius
- Netherton Library
- Netherton Road – 2 mile radius
- Orrell Library
- Orrell Library – 2 mile radius
- Southport Library
- Southport Library – 2 mile radius

Achieving 5A* - C GCSEs (or Equivalent) inc. English & Maths - Department of Education August 2011

■ Data Suppressed	(60)
■ 0% to 41% Population	(19)
■ 41% to 58% Population	(38)
■ 58% to 70% Population	(37)
■ 70% to 100% Population	(36)