

NEET Data report, December 2012

Sefton's NEET is reducing year on year.

In December 2012 it stood at 6.6%, in comparison to December 2011 when it was 7.5%. However it is best to review NEET trends over a quarterly basis as level are affected by seasonal factors, eg school leaving dates (summer period) or temporary employment opportunities at Christmas etc.

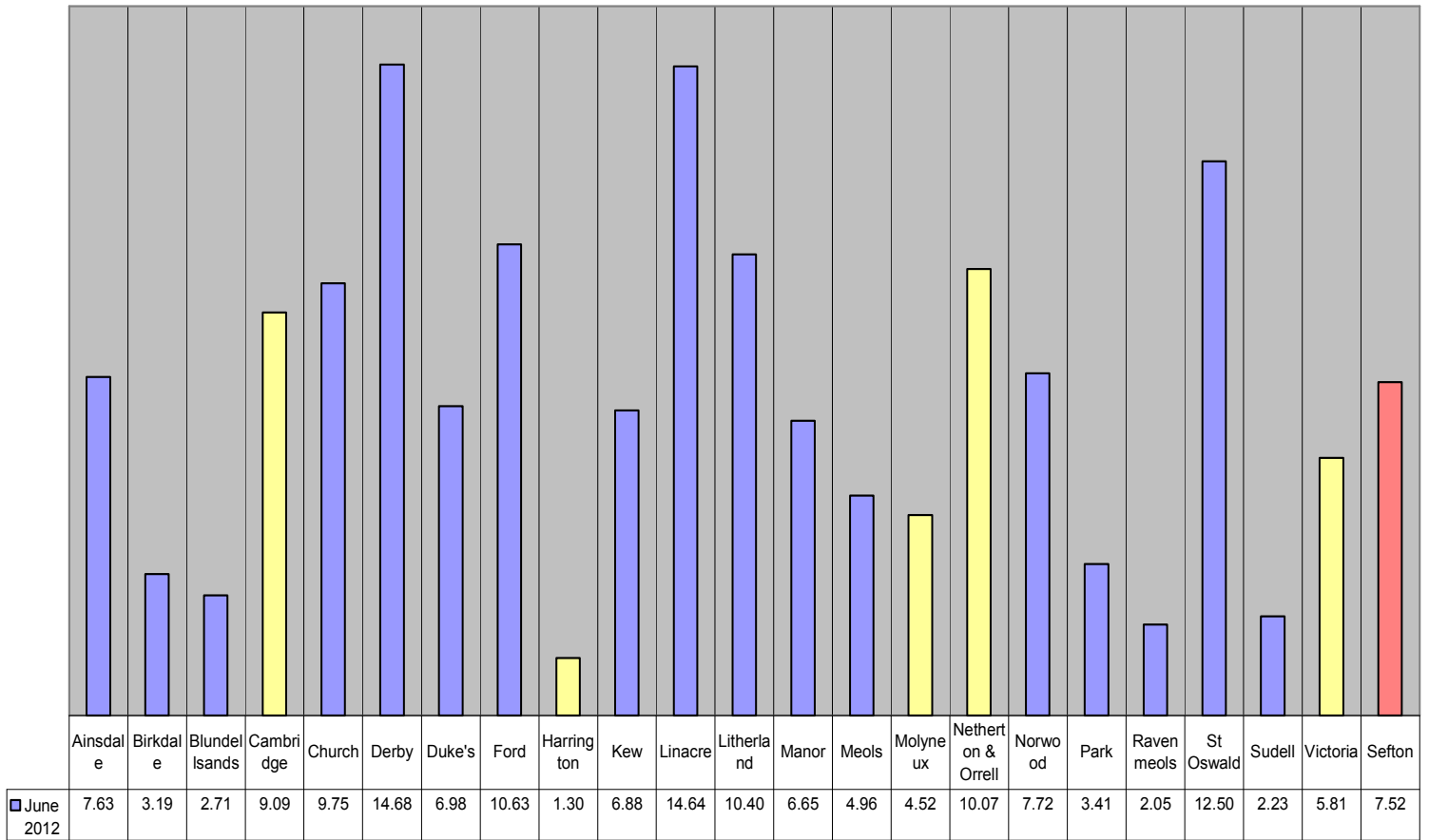
The table and graphs show all wards at quarter end points, highlighting the specific ward data that was requested (in yellow on graph).

The wards have been shown against the Sefton average to show the diversity across the Borough.

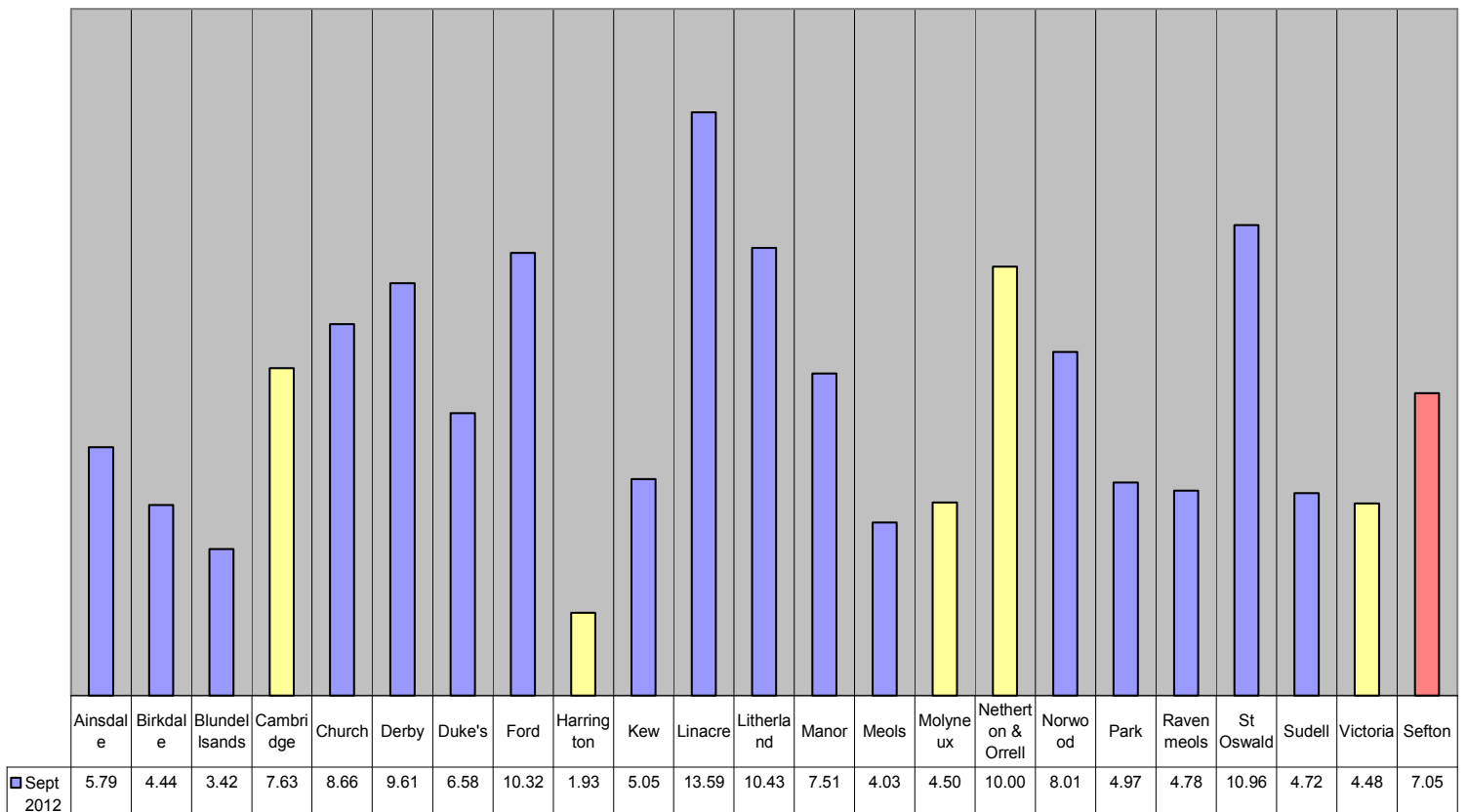
Sefton NEET by Ward (%)

	March 2012	June 2012	Sept 2012	Dec 2012
Ainsdale	6.58	7.63	5.79	7.37
Birkdale	5.14	3.19	4.44	5.22
Blundellsands	3.75	2.71	3.42	1.74
Cambridge	9.59	9.09	7.63	5.47
Church	8.96	9.75	8.66	8.25
Derby	13.76	14.68	9.61	9.83
Duke's	6.69	6.98	6.58	7.23
Ford	8.43	10.63	10.32	10.71
Harrington	3.33	1.30	1.93	1.33
Kew	6.90	6.88	5.05	4.52
Linacre	14.73	14.64	13.59	12.99
Litherland	11.02	10.40	10.43	9.71
Manor	7.26	6.65	7.51	7.34
Meols	5.72	4.96	4.03	2.91
Molyneux	4.48	4.52	4.50	3.43
Netherton & Orrell	10.45	10.07	10.00	7.31
Norwood	7.78	7.72	8.01	6.44
Park	2.86	3.41	4.97	4.25
Ravenmeols	3.83	2.05	4.78	3.8
St Oswald	13.93	12.50	10.96	11.86
Sudell	3.10	2.23	4.72	2.86
Victoria	6.20	5.81	4.48	4.87
Sefton	7.73	7.52	7.05	6.60

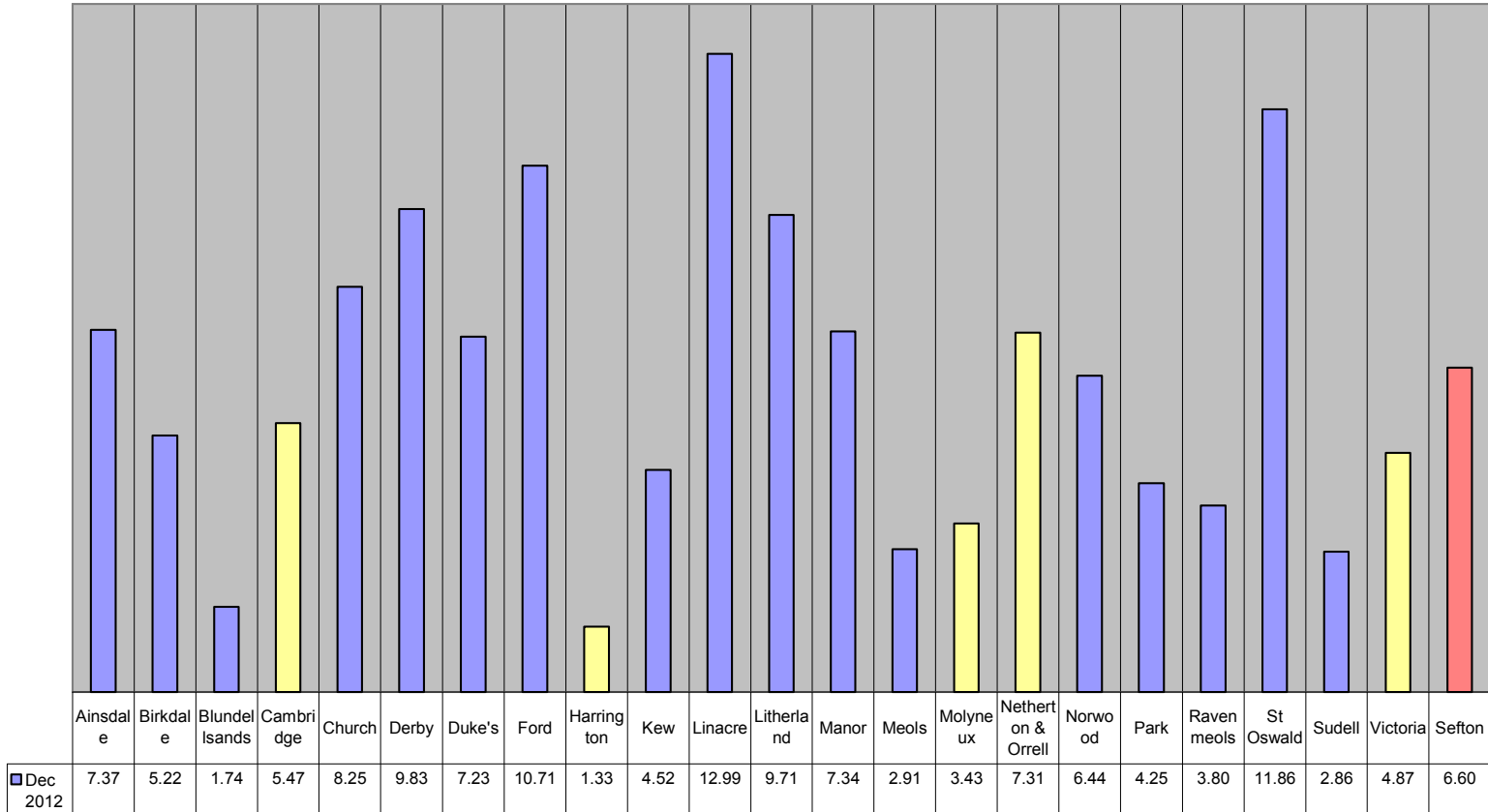
Sefton NEET by Ward - June 2012



Sefton NEET by Ward - September 2012

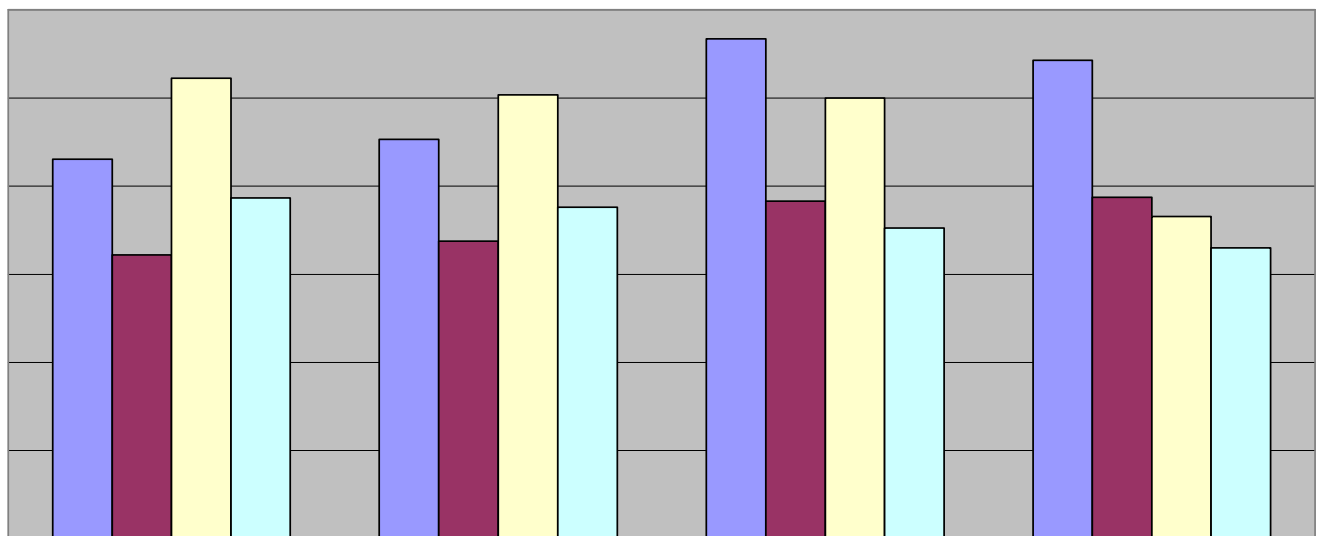


Sefton NEET by Ward - December 2012



Data specific to 5 requested wards

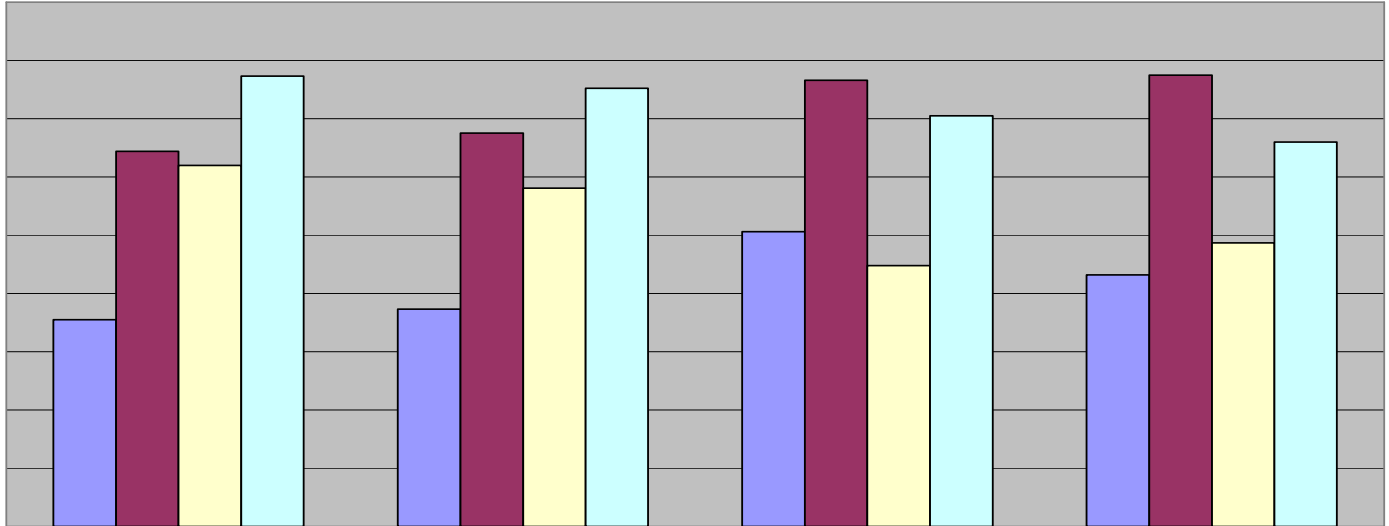
Netherton & Orrell / Sefton NEET



	March	June	Sept	Dec
2011	8.61%	9.06%	11.34%	10.85%
2011 (Sef)	6.44%	6.75%	7.66%	7.75%
2012	10.45%	10.07%	10.00%	7.31%
2012 (Sef)	7.73%	7.52%	7.05%	6.60%

2011 2011 (Sef) 2012 2012 (Sef)

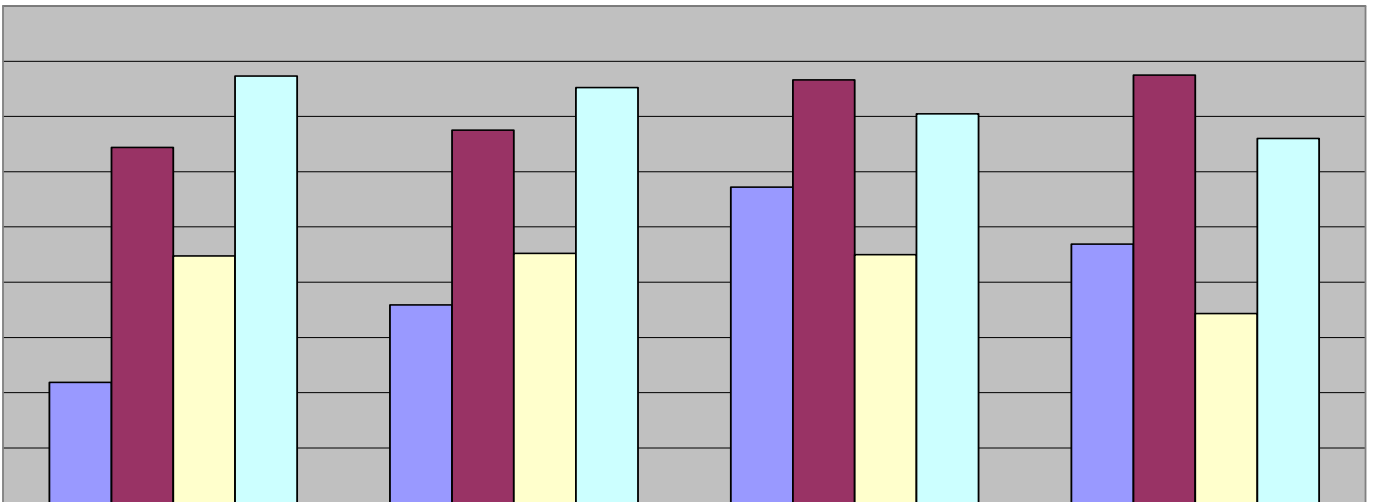
Victoria / Sefton NEET



	March	June	Sept	Dec
2011	3.55%	3.73%	5.06%	4.32%
2011 (Sef)	6.44%	6.75%	7.66%	7.75%
2012	6.20%	5.81%	4.48%	4.87%
2012 (Sef)	7.73%	7.52%	7.05%	6.60%

2011 2011 (Sef) 2012 2012 (Sef)

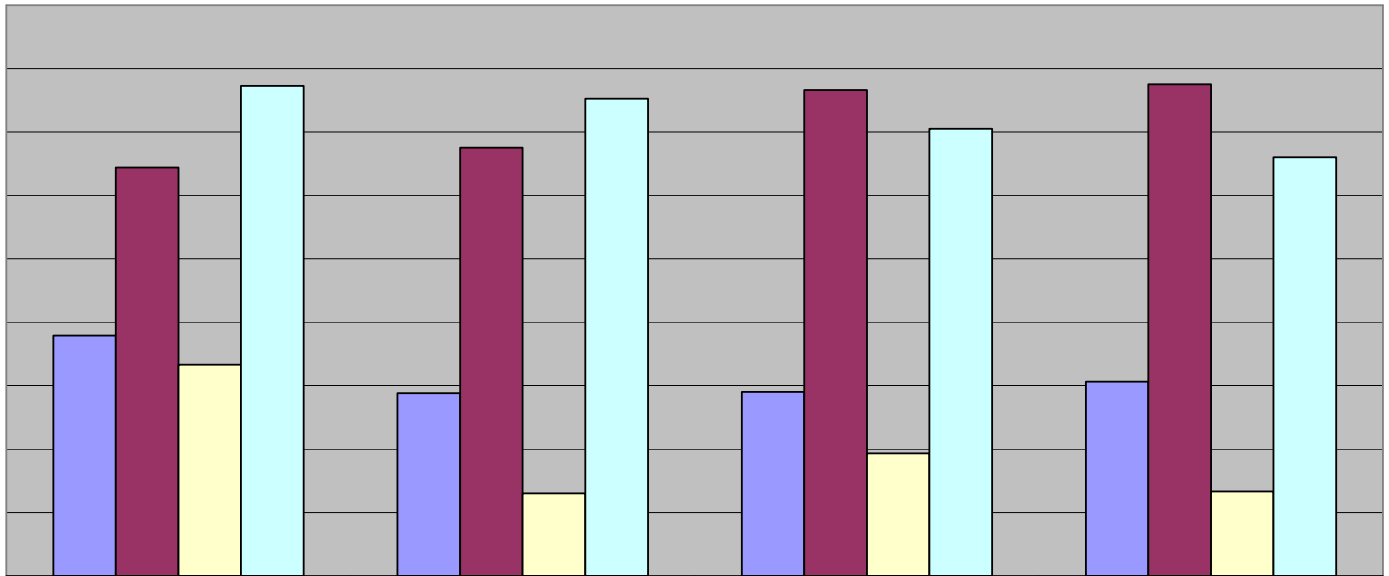
Molyneux / Sefton NEET



	March	June	Sept	Dec
2011	2.19%	3.59%	5.72%	4.69%
2011 (Sef)	6.44%	6.75%	7.66%	7.75%
2012	4.48%	4.52%	4.50%	3.43%
2012 (Sef)	7.73%	7.52%	7.05%	6.60%

2011 2011 (Sef) 2012 2012 (Sef)

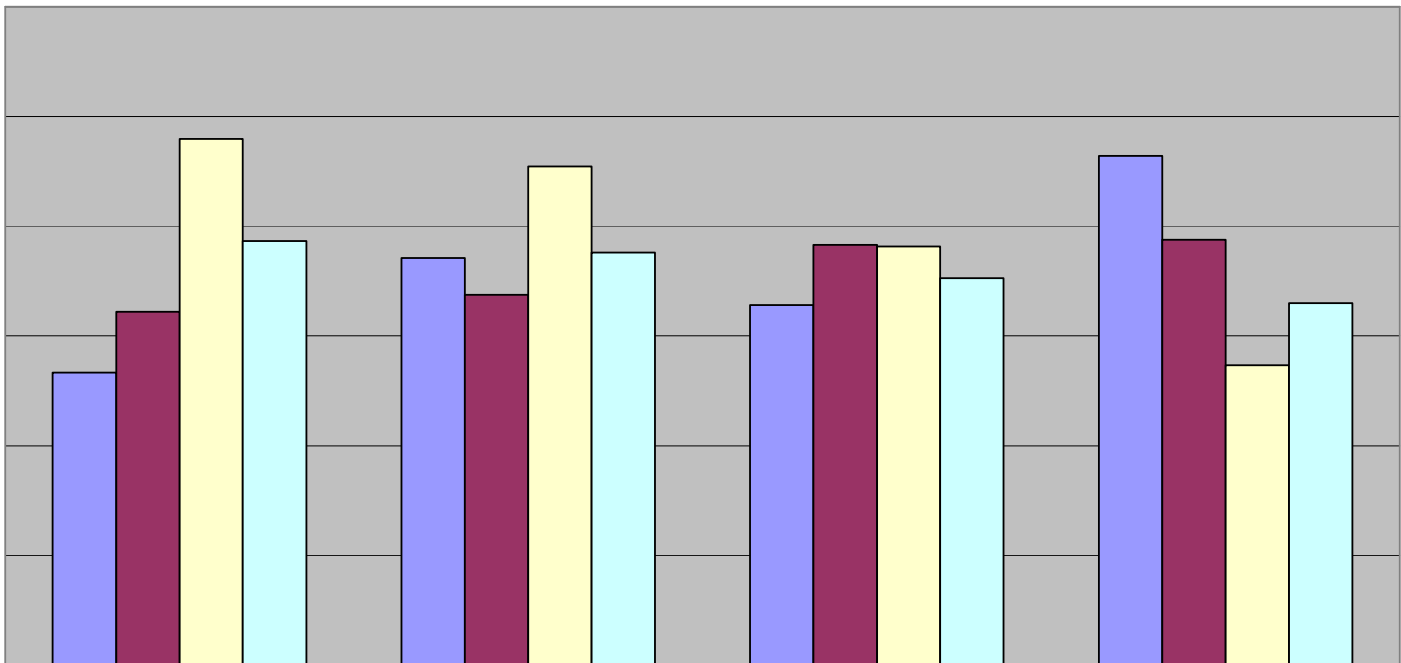
Harrington / Sefton NEET



	March	June	Sept	Dec
2011	3.79%	2.88%	2.90%	3.06%
2011 (Sef)	6.44%	6.75%	7.66%	7.75%
2012	3.33%	1.30%	1.93%	1.33%
2012 (Sef)	7.73%	7.52%	7.05%	6.60%

2011 2011 (Sef) 2012 2012 (Sef)

Cambridge / Sefton NEET



	March	June	Sept	Dec
2011	5.33%	7.42%	6.56%	9.28%
2011 (Sef)	6.44%	6.75%	7.66%	7.75%
2012	9.59%	9.09%	7.63%	5.47%
2012 (Sef)	7.73%	7.52%	7.05%	6.60%

2011 2011 (Sef) 2012 2012 (Sef)

The data relates to 16 – 18yr olds (This is defined by Central Government as academic year ages, so will include some 19 yr olds.) The biggest issue in all wards is 18yr old NEET rates.

From this summer, all 16yrs olds with the advent of Raising Participation Age legislation (RPA) have to be in learning until the age of 17ys (academic age), essentially raising the 'school leaving age' to 17. However, students do not have to stay at school, but need to be in formal learning at schools, colleges, apprenticeships or jobs with training. This rises to 18 yrs in 2015.

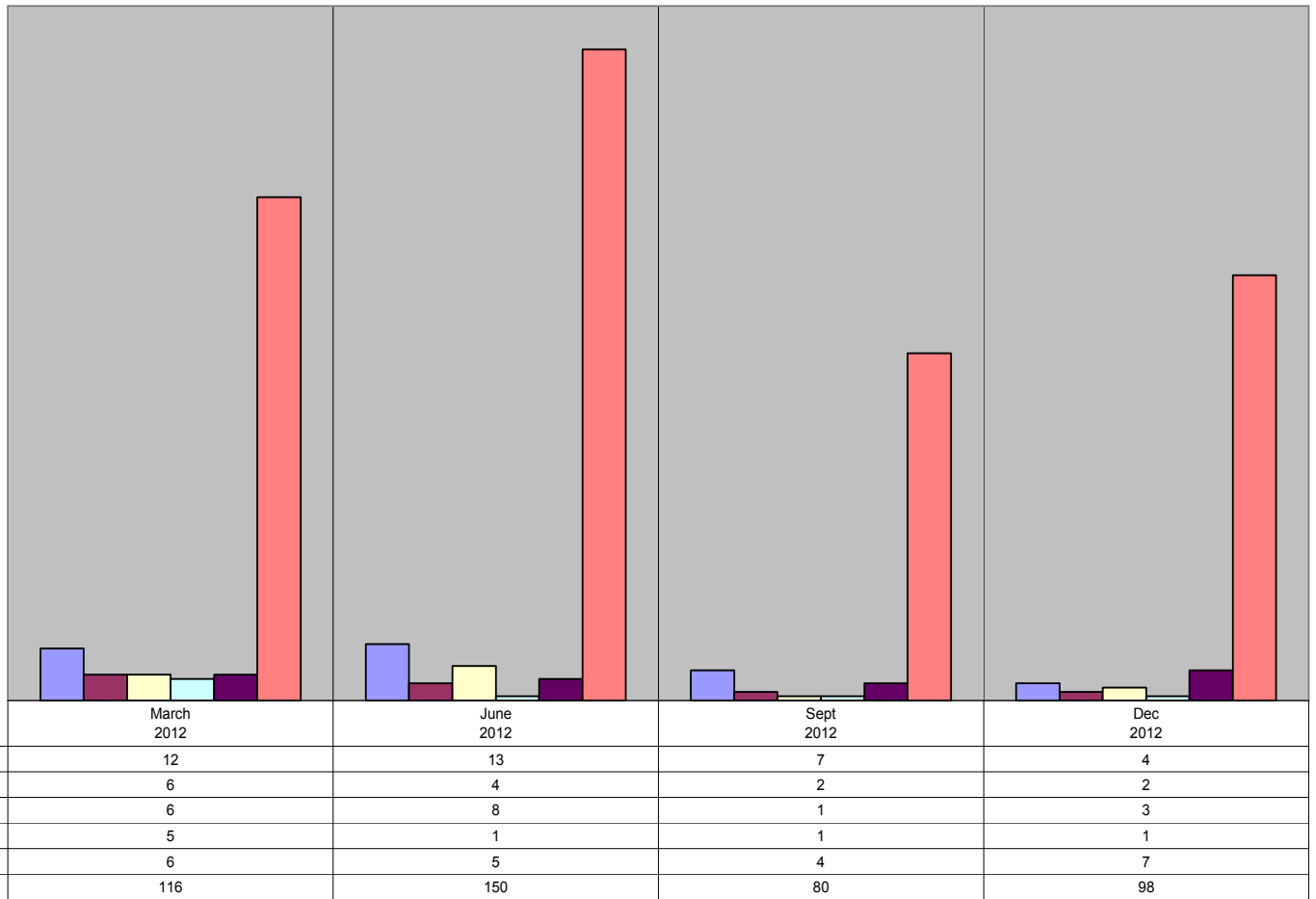
It is vital that students receive excellent information, advice and guidance in planning their progression pathways following GCSEs into continuing academic and vocational routes. The data reflects the drop off in 17yr olds, and again in 18yr olds in learning opportunities.

If students choose inappropriate courses/progression routes and effectively 'drop out', data shows us it is increasingly difficult to re-establish them in alternative learning opportunities. September is traditional start dates for school and college courses, but colleges are able to offer January starts now to try and solve this issue. Some are looking at rolling induction, but this needs to be embedded in curriculum planning and the 'student life' experience.

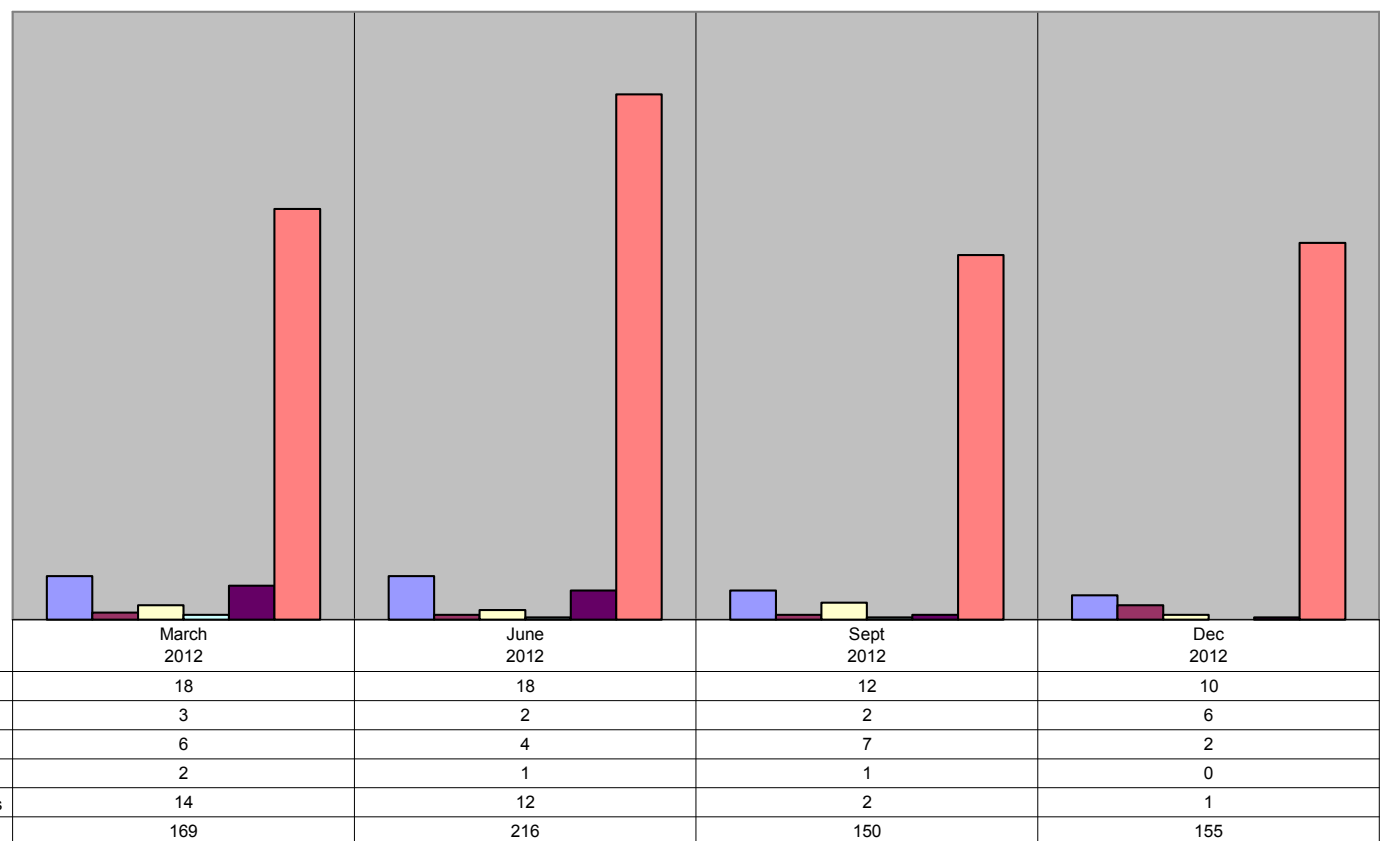
Age trends

	March 2012	June 2012	Sept 2012	Dec 2012
Netherton & Orrell				
16yrs	12	13	7	4
17yrs	18	18	12	10
18yrs	21	21	27	22
Victoria				
16yrs	6	4	2	2
17yrs	3	2	2	6
18yrs	18	21	13	13
Molyneux				
16yrs	6	8	1	3
17yrs	6	4	7	2
18yrs	7	8	10	10
Harrington				
16yrs	5	1	1	1
17yrs	2	1	1	0
18yrs	5	3	5	3
Cambridge				
16yrs	6	5	4	7
17yrs	14	12	2	1
18yrs	8	8	12	6
Sefton				
16yrs	116	150	80	98
17yrs	169	216	150	155
18yrs	240	306	335	317

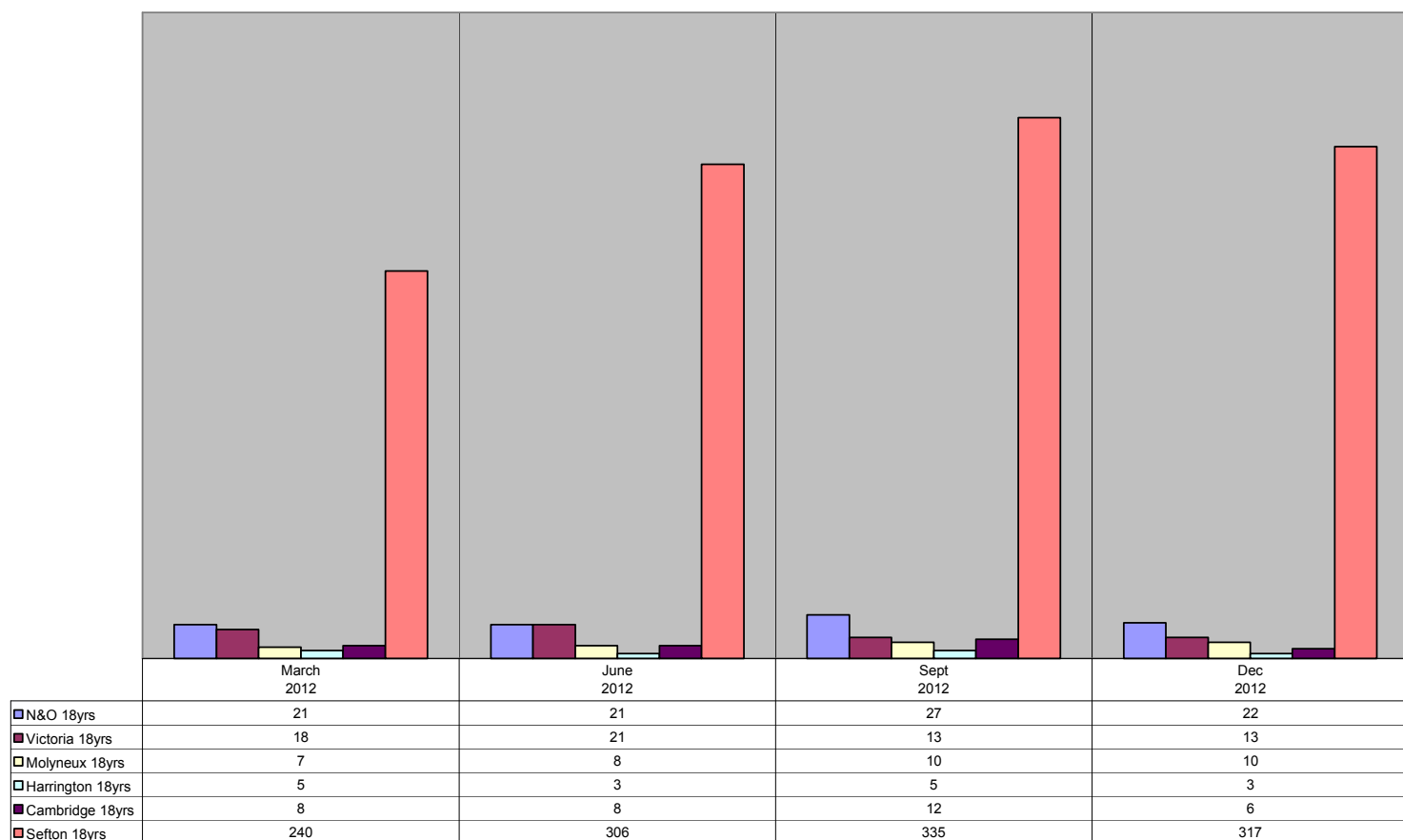
NEET by Ward / Age - 16yrs



NEET by Ward / Age - 17yrs



NEET by Ward / Age - 18yrs

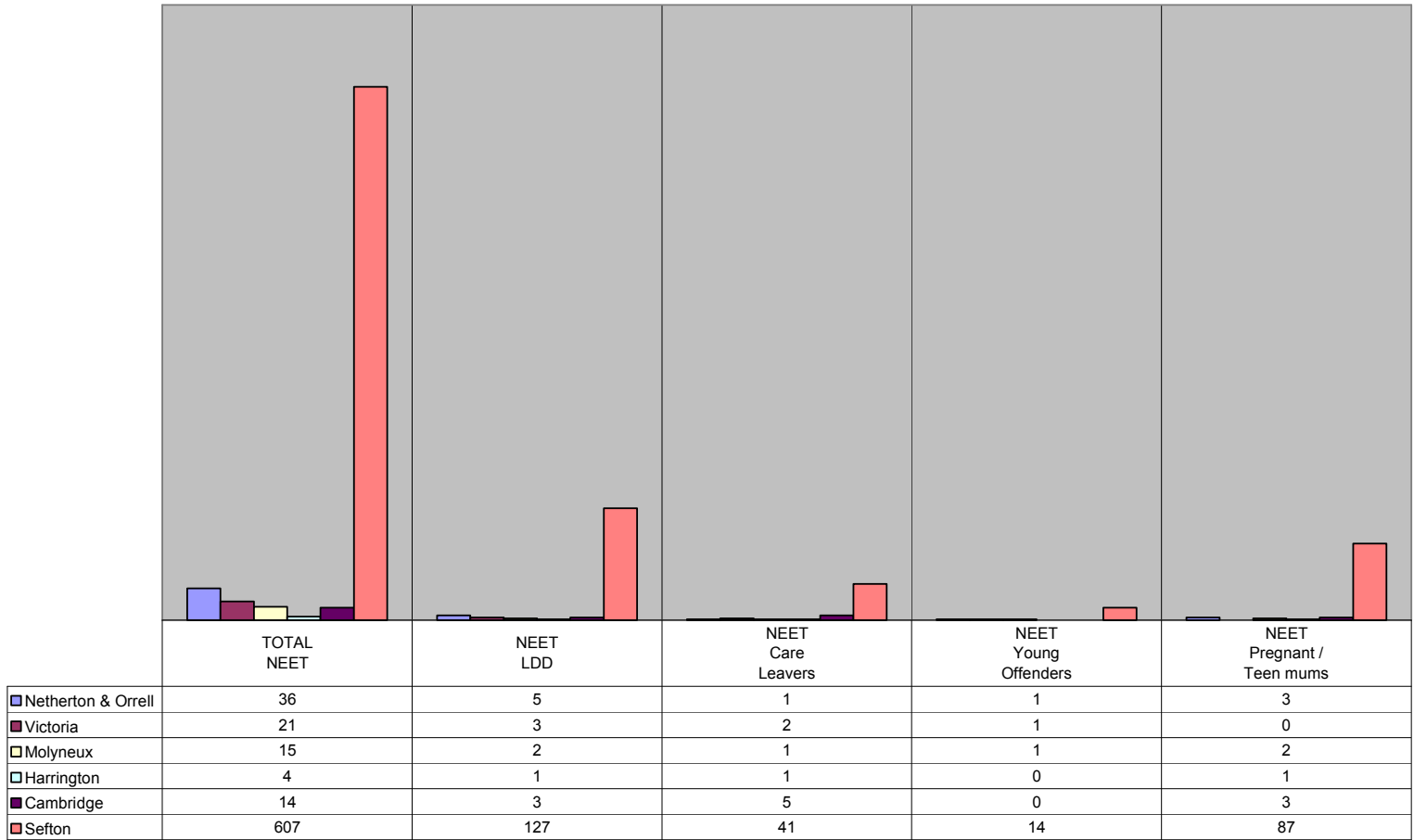


Vulnerable groups

The following data reflects key issues for consideration across Sefton, Young people who are can be identified as being vulnerable to NEET are those who have learning difficulties and disabilities, those who are in the care system, young mums and those who are currently displaying offending behaviour. Targeted support is in place to identify these young people and work to engage them in learning is intensive, but the NEET levels are still high for these groups in comparison with the general cohort. This needs to be addressed and supported by targeted information, advice and more importantly guided support from at least yr 9 onwards.

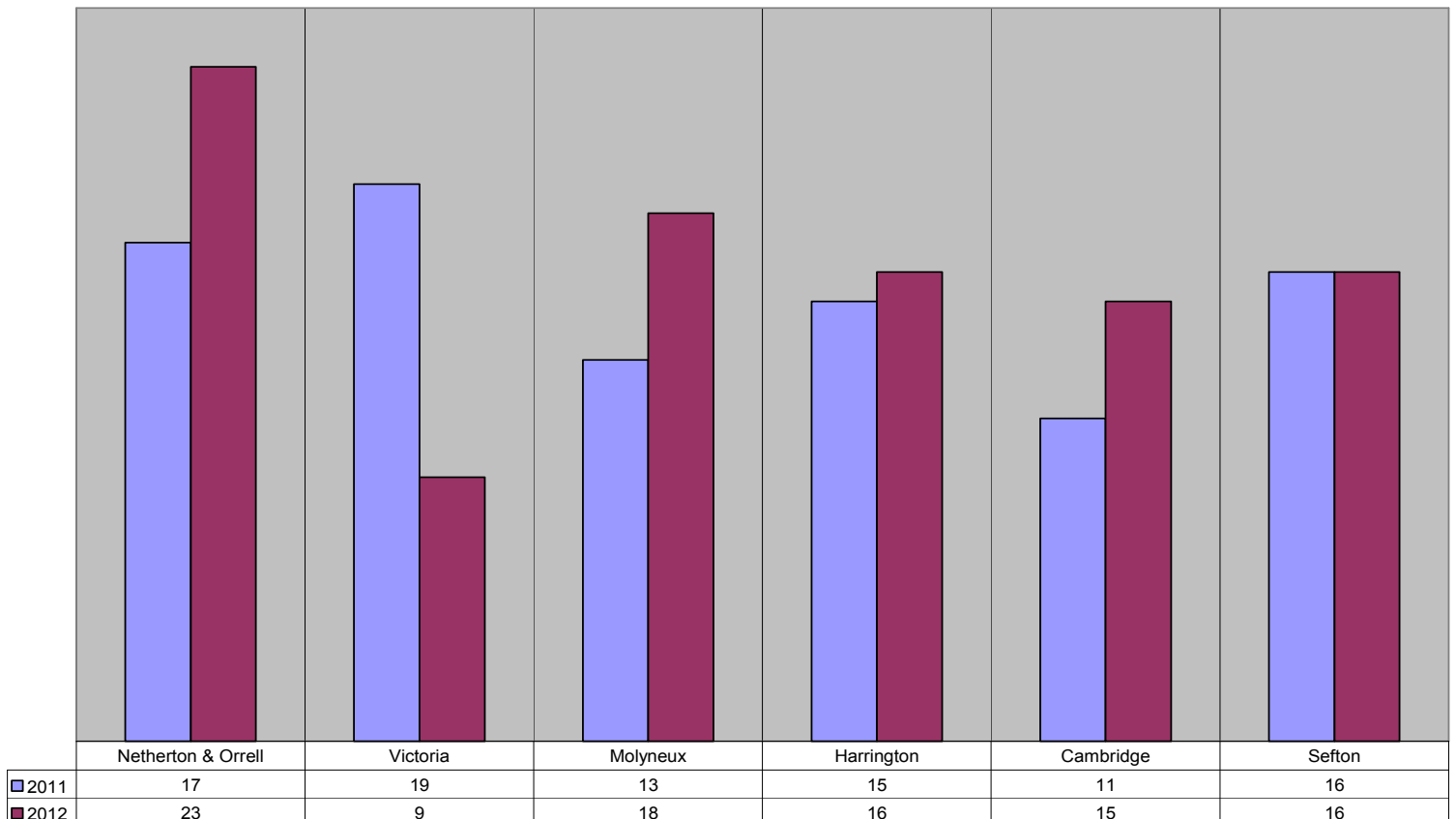
December 2012	TOTAL NEET	NEET LDD	NEET Care Leavers	NEET Young Offenders	NEET Pregnant / Teen mums
Netherton & Orrell	36	5	1	1	3
Victoria	21	3	2	1	0
Molyneux	15	2	1	1	2
Harrington	4	1	1	0	1
Cambridge	14	3	5	0	3
Sefton	607	127	41	14	87

NEET by Ward / Vulnerable Group - December 2012



Young people in Sefton are in NEET longer on average than our neighbours. Sefton does have the lowest NEET rates in the Liverpool city region and consequently those in NEET are more likely to be the most hard to engage and re-engage. The 5 wards, whilst having lower NEET than the Sefton average, do have (in the main) an issue with local young people being NEET for longer period of time.

Average Time in NEET (weeks)



The information below shows the pattern of activity for school leavers across the five wards, move on from school is positive in Sefton with a high in learning rate. This rate needs to be sustained across the 16-18 age range.

Activity Survey:

The activity for all school leavers as recorded on 1st November in the year they left compulsory education

	2012				2011			
	Yr11 Learning		Yr11 NEET		Yr11 Learning		Yr11 NEET	
	%	No.	%	No.	%	No.	%	No.
Netherton & Orrell	95.7	157	3.0	5	93.5	173	6.5	12
Victoria	98.2	163	1.2	2	97.9	142	0.7	1
Molyneux	99.3	143	0.7	1	94.8	147	2.6	4
Harrington	99.2	123	0.8	1	97.8	131	0.7	1
Cambridge	91.5	65	5.6	4	96.7	89	3.3	3
Sefton	95.7	3278	2.6	89	96.0	3343	2.7	95

An issue we will have with the introduction of RPA, will be the number of young people in jobs without training. This will not be 'legal' post September 2013 for 16 yr olds. Further breakdown on age range is needed and will be available on the near future in order to address this issue and support the development of apprenticeships.

Employed Without Training

	2012	
	Sept	Dec
Netherton & Orrell	9	15
Victoria	4	15
Molyneux	15	25
Harrington	8	10
Cambridge	2	3
Sefton	201	304