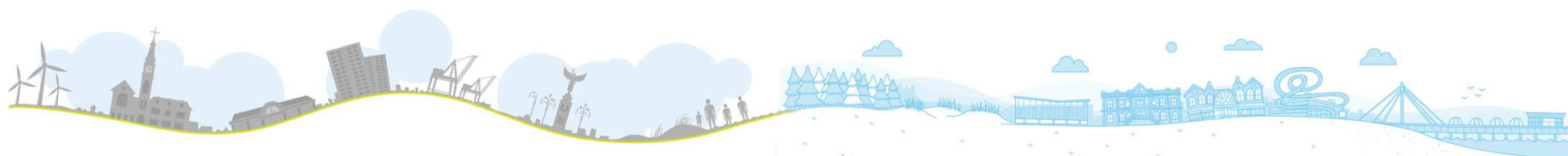


# Main Provider Performance – February 2016

The following slides present performance against key strategic, NHS constitution, quality and safety indicators for the main providers the two CCGs commission from.

Time periods vary for the indicators presented, and are indicated in the tables.



Staying **local & together**

**together** with you

# Southport & Formby CCG

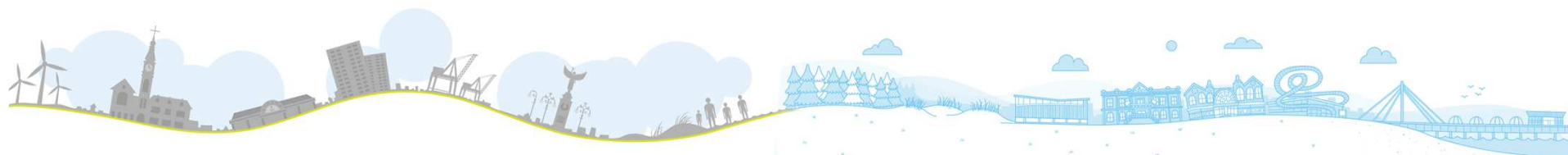


South Sefton Clinical Commissioning Group  
Southport and Formby Clinical Commissioning Group

Key Performance Area	Time Period	Performance	Target	Trend
A&E 4hour Waits, All Types (Southport & Ormskirk)	Nov-15	93.6%	95%	
Cancer 2 Week Waits (Southport & Ormskirk)	Oct-15	95.1%	93%	
Cancer 62 Day - Screening (Southport & Ormskirk)	Oct-15	72.2%	90%	
Cancer 31 Day (Southport & Ormskirk)	Oct-15	98.2%	96%	
RTT -18 Weeks Incomplete (Southport & Ormskirk)	Oct-15	94.9%	90%	
C.Difficile (Southport & Ormskirk)	Nov-15	15	24 (year end)	
MRSA (Southport & Ormskirk)	Nov-15	1	0	
Stroke (80% of Pts spending 90% of time on Stroke Unit) (Southport & Ormskirk)	Nov-15	47.2%	80%	
Ambulance Category A (Red 1) 8 minute response time (CCG LEVEL)	Nov-15	75.5%	75%	
Mental Health: Care Programme Approach (Quarterly)	Sep-15	100.0%	95%	
Mental Health: IAPT 15% Access (CCG LEVEL)	Nov-15	5.3%	15% year end	
Mental Health: IAPT 50% Recovery (CCG LEVEL)	Nov-15	38.2%	50%	
Mental Health: IAPT waiting <6 weeks (Quarterly)	Sep-15	99.0%	75%	
Mental Health: IAPT waiting <18 weeks (Quarterly)	Sep-15	100.0%	90%	
Better Care Fund: Non Elective Admissions reduction (Sefton level) (Quarterly)	Sep-15	8574	-3%	

# Southport & Ormskirk Friends & Family

Measure	Time Period	Southport & Ormskirk	England Average	Trend
Inpatient – response	Nov-15	<b>21.6%</b>	<b>23.4%</b>	
Inpatient Recommended	Nov-15	<b>95.0%</b>	<b>95.6%</b>	
Inpatient Not Recommended	Nov-15	<b>2.0%</b>	<b>1.5%</b>	
A&E – response	Nov-15	<b>2.6%</b>	<b>12.7%</b>	
A&E Recommended	Nov-15	<b>81.0%</b>	<b>87.4%</b>	
A&E Not Recommended	Nov-15	<b>11.0%</b>	<b>6.9%</b>	



# South Sefton CCG



South Sefton Clinical Commissioning Group  
Southport and Formby Clinical Commissioning Group

Key Performance Area	Time Period	Performance	Target	Trend
A&E 4hour Waits, All Types (Aintree)	Nov-15	93.2%	95%	
Cancer 2 Week Waits (Aintree)	Oct-15	96.3%	93%	
Cancer 62 Day - Screening (Aintree)	Oct-15	97.7%	90%	
Cancer 31 Day (Aintree)	Oct-15	99.6%	96%	
RTT -18 Weeks Incomplete (Aintree)	Oct-15	95.7%	90%	
C.Difficile (Aintree)	Nov-15	15	30 (year end)	
MRSA (Aintree)	Nov-15	0	0	
Stroke (80% of Pts spending 90% of time on Stroke Unit) (Aintree)	Nov-15	71.7%	80%	
Ambulance Category A (Red 1) 8 minute response time (CCG LEVEL)	Nov-15	78.3%	75%	
Mental Health: Care Programme Approach (Quarterly)	Sep-15	98.3%	95%	
Mental Health: IAPT 15% Access (CCG LEVEL)	Nov-15	6.4%	15% year end	
Mental Health: IAPT 50% Recovery (CCG LEVEL)	Nov-15	48.5%	50%	
Mental Health: IAPT waiting <6 weeks (Quarterly)	Sep-15	98.0%	75%	
Mental Health: IAPT waiting <18 weeks (Quarterly)	Sep-15	100.0%	90%	
Better Care Fund: Non Elective Admissions reduction (Sefton level) (Quarterly)	Sep-15	8574	-3%	

# Aintree University Friends & Family

Measure	Time Period	Aintree	England Average	Trend
Inpatient – response	Nov-15	56.7%	23.4%	
Inpatient Recommended	Nov-15	96.0%	95.6%	
Inpatient Not Recommended	Nov-15	2.0%	1.5%	
A&E – response	Nov-15	21.5%	12.7%	
A&E Recommended	Nov-15	87.0%	87.4%	
A&E Not Recommended	Nov-15	7.0%	6.9%	

