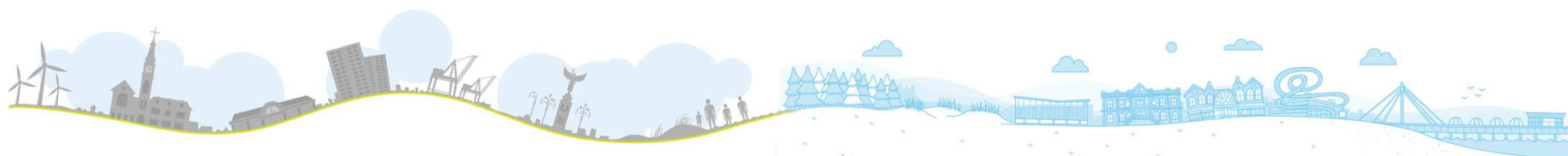


Main Provider Performance – October 2017

The following slides present performance against key strategic, NHS constitution, quality and safety indicators for the main providers the two CCGs commission from.

Time periods vary for the indicators presented, and are indicated in the tables.



Southport & Formby CCG



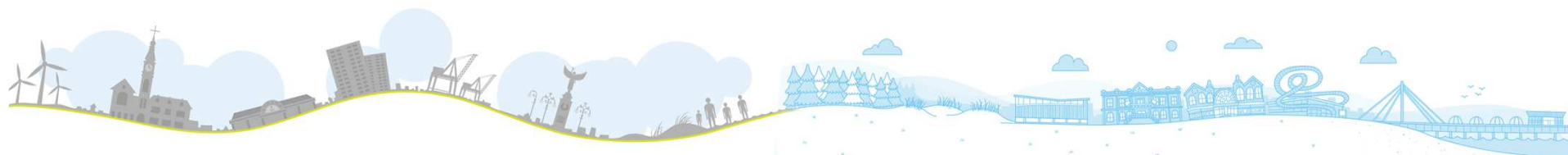
South Sefton Clinical Commissioning Group
Southport and Formby Clinical Commissioning Group

Key Performance Area	Time Period	Performance	Target	Trend
A&E 4hour Waits, All Types (Southport & Ormskirk, cumulative YTD)	Jul-17	89.8%	90.7% (STP trajectory)	
Cancer 2 Week Waits (Southport & Ormskirk, cumulative YTD)	Jul-17	94.6%	93%	
Cancer 62 Day - Screening (Southport & Ormskirk Cumulative YTD)	Jul-17	100.0%	90%	
Cancer 31 Day (Southport & Ormskirk, cumulative YTD)	Jul-17	99.2%	96%	
RTT -18 Weeks Incomplete (Southport & Ormskirk, in month snapshot position)	Jul-17	94.0%	94%	
C.Difficile (Southport & Ormskirk, cumulative YTD)	Jul-17	2	36 (year end)	
MRSA (Southport & Ormskirk, cumulative YTD)	Jul-17	0	0	
Stroke (80% of Pts spending 90% of time on Stroke Unit, Southport & Ormskirk, monthly snapshot position)	Jul-17	48.7%	80%	
% TIA assessed and treated within 24 hours (Southport & Ormskirk, monthly snapshot position)	Jul-17	0.0%	60%	
Ambulance Category A (Red 1) 8 minute response time (CCG LEVEL, cumulative YTD)	Jul-17	59.0%	75%	
Mental Health: Care Programme Approach (Quarterly)	Jun-17	97.3%	95%	
Mental Health: IAPT 15% Access (CCG LEVEL)	Jul-17	1.19%	1.4% per month (16.8% year end)	
Mental Health: IAPT 50% Recovery (CCG LEVEL)	Jul-17	55.1%	50%	
Mental Health: IAPT waiting <6 weeks (Quarterly)	Jun-17	100.0%	75%	
Mental Health: IAPT waiting <18 weeks (Quarterly)	Jun-17	100.0%	90%	



Southport & Ormskirk Friends & Family

Measure	Time Period	Southport & Ormskirk	England Average	Trend
Inpatient – response	Jul-17	18.5%	25.0%	
Inpatient Recommended	Jul-17	90.0%	96.0%	
Inpatient Not Recommended	Jul-17	6.0%	2.0%	
A&E – response	Jul-17	1.8%	15.0%	
A&E Recommended	Jul-17	80.0%	86.0%	
A&E Not Recommended	Jul-17	11.0%	8.0%	



South Sefton CCG



South Sefton Clinical Commissioning Group
Southport and Formby Clinical Commissioning Group

Key Performance Area	Time Period	Performance	Target	Trend
A&E 4hour Waits, All Types (Aintree)	Jul-17	81.1%	90% (STP trajectory)	
Cancer 2 Week Waits (Aintree)	Jul-17	94.4%	93%	
Cancer 62 Day - Screening (Aintree)	Jul-17	86.4%	90%	
Cancer 31 Day (Aintree)	Jul-17	98.3%	96%	
RTT -18 Weeks Incomplete (Aintree)	Jul-17	92.4%	92%	
C.Difficile (Aintree)	Jul-17	23 (18 following appeal)	46 (year end)	
MRSA (Aintree)	Jul-17	1	0	
Stroke (80% of Pts spending 90% of time on Stroke Unit) (Aintree)	Jul-17	57.1%	80%	
% TIA assessed and treated within 24 hours (Aintree)	Jul-17	100%	60%	
Ambulance Category A (Red 1) 8 minute response time (CCG LEVEL)	Jul-17	74.5%	75%	
Mental Health: Care Programme Approach (Quarterly)	Jun-17	97.5%	95%	
Mental Health: IAPT 15% Access (CCG LEVEL)	Jul-17	1.30%	1.4% per month (16.8% year end)	
Mental Health: IAPT 50% Recovery (CCG LEVEL)	Jul-17	47.0%	50%	
Mental Health: IAPT waiting <6 weeks (Quarterly)	Jun-17	97.9%	75%	
Mental Health: IAPT waiting <18 weeks (Quarterly)	Jun-17	99.5%	90%	



Staying local & together



together with you

Aintree University Friends & Family

Measure	Time Period	Aintree	England Average	Trend
Inpatient – response	Jul-17	18.3%	25.0%	
Inpatient Recommended	Jul-17	96.0%	96.0%	
Inpatient Not Recommended	Jul-17	2.0%	2.0%	
A&E – response	Jul-17	16.5%	15.0%	
A&E Recommended	Jul-17	78.0%	86.0%	
A&E Not Recommended	Jul-17	14.0%	8.0%	

